



APx500 Flex Setup Guide

RME Fireface UC

Overview

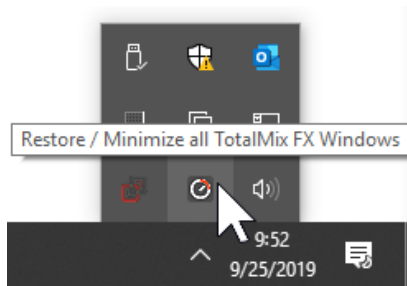
Before an RME Fireface UC can be used with APx500 Flex, the device driver must be installed and the gain settings configured appropriately using the TotalMix FX and Fireface USB Settings applications. 48V phantom power may also optionally be enabled. Follow the steps below to set up your device.

Driver installation

1. Connect a powered Fireface UC to your computer over USB.
2. Download the latest device driver for your operating systems from the RME website.
3. Install the driver and reboot your PC.

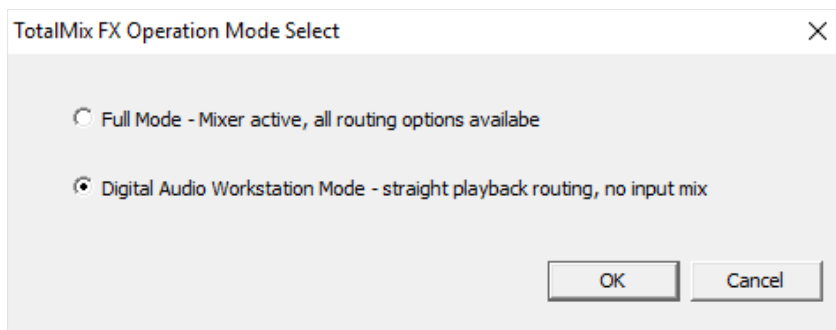
Configuring “TotalMix FX”

1. Launch TotalMix FX from the Windows taskbar.



The TotalMix FX application icon.

2. Select Options→Operational Mode from the application menu.
3. Select “Digital Audio Workstation Mode”.

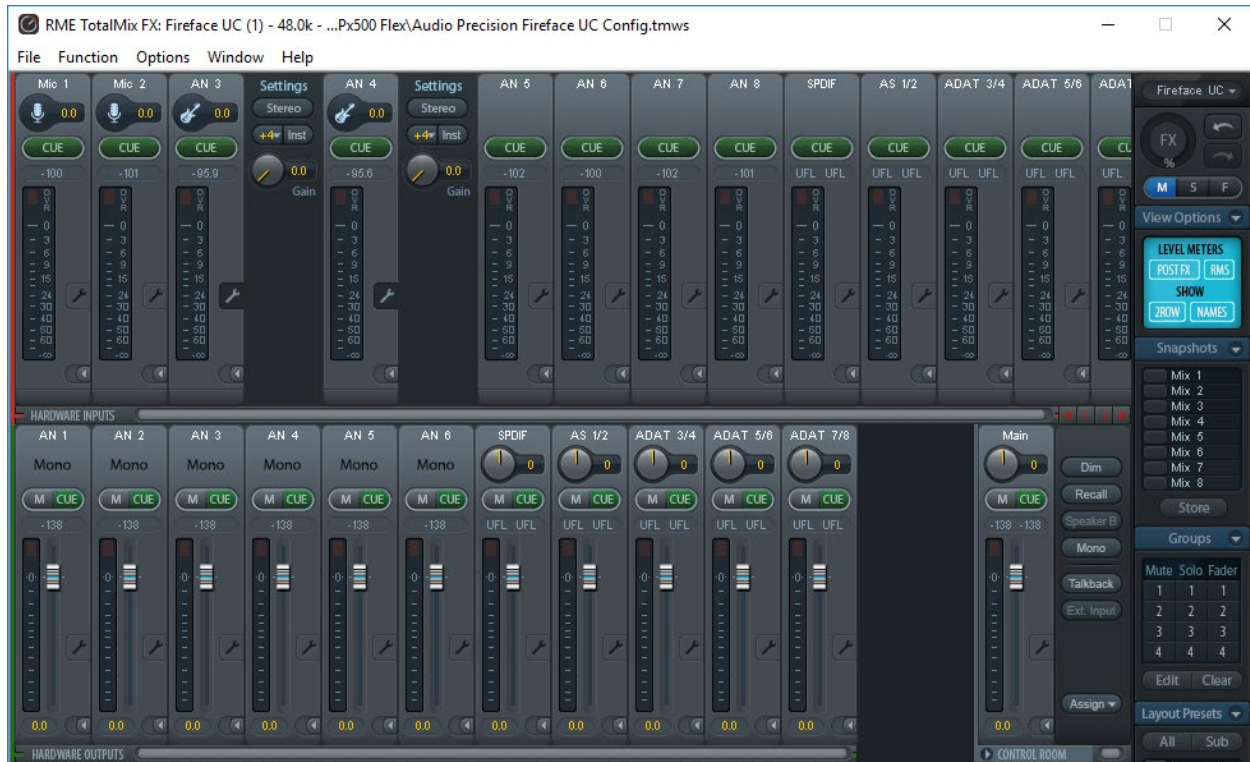


The Operational Mode dialog.

4. Click OK to confirm the change. The TotalMix FX application will automatically close.
5. Re-launch TotalMix FX from the taskbar.
6. Select File→Load Workspace from the application menu.

7. Load the supplied workspace file “APx500 Flex - RME Fireface UC Workspace.tmws” to apply the appropriate gain settings.

At this point your settings should resemble those in the screen capture, below.



The configured TotalMix FX application.

If a phantom powered microphone is to be used, 48V phantom power should also be enabled on the appropriate microphone input channel. With the configured TotalMix FX application open,

1. In the “Hardware Inputs” panel, click the settings wrench adjacent to the level meter for either Mic 1 or Mic 2, depending on the intended connection of the microphone.

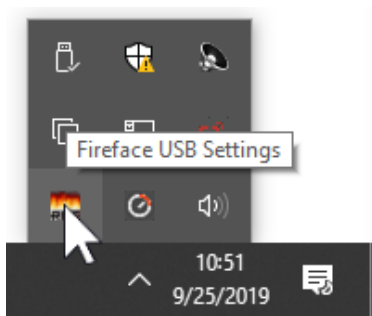


The settings button for microphone input 1.

2. Click the button labeled “48V” on the panel that appears to enable phantom power on that channel. An orange highlight indicates phantom power is enabled, whereas dark gray indicates the setting is disabled.
3. Repeat for the other microphone input, if necessary.

Configuring “Fireface USB Settings”

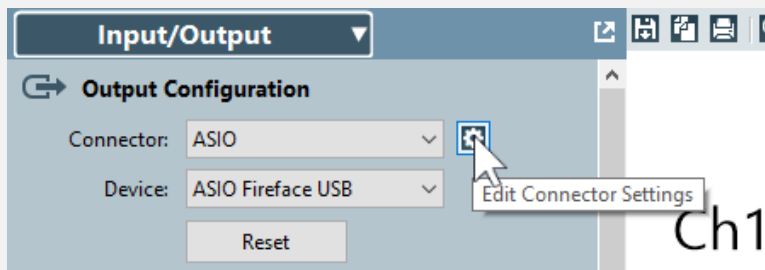
1. Launch the Fireface USB Settings application from the Windows taskbar. This application contains additional settings which cannot be found in the TotalMix FX application.



The Fireface USB Settings application icon.

If the Fireface USB Settings application cannot be found in the Windows taskbar, it can also be launched from the APx500 software using the following steps:

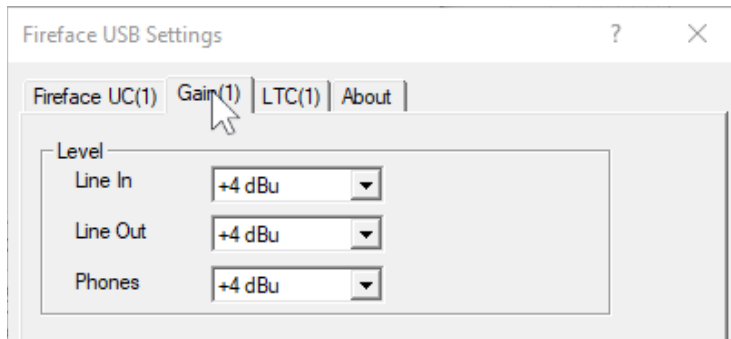
- A. Run the APx500 software.
- B. Click File->New Project...
- C. Select RME Fireface UC and click Create Project.
- D. Once the project loads, click the settings icon near the output Connector drop-down.



The Output Connector Settings button.

- E. Click the “Control Panel” button in the settings dialog that appears. The Fireface USB Settings application should launch.

2. View the “Gain” tab.
3. Configure the Line In, Line Out, and Phones trims to be +4 dBu.



The Gain settings tab.

Calibration

Once the ASIO interface has been configured, the input and output sensitivities of the device should be entered into the APx500 software so that signals can be generated and acquired accurately in analog units. A project file template, pre-configured for this device, has been included with APx500 Flex. It can be accessed from the File→New Project... menu item.

Alternatively, to manually calibrate the output and input,

1. Run APx500 Flex.
2. Set “Device” to “ASIO Fireface USB” in either the output or input configuration panel.
3. Set the output “Scaling Mode” to “Analog”.
4. Set the single output scaling factor to the value in the “Output Sensitivities” table below.
5. Set the input “Scaling Mode” to “Analog”.
6. Set the input scaling factor for each channel based on the physical inputs to be used, using the “Input Sensitivities” table below as a reference.

Output Sensitivities	
Line Outputs 1-6 (bal/unbal)*	3.4 V/FS
Line Outputs 7-8 (unbal)**	3.4 V/FS

*Measured with Line Out gain set to +4 dBu.

**Measured with Phones gain set to +4 dBu.

Input Sensitivities	
Mic Inputs 1-2 (XLR bal)	380 mFS/V
Line Inputs 1-2 (TRS bal/TS unbal)*	110 mFS/V
Line Inputs 3-8 (bal/unbal)**	280 mFS/V

*Measured with Line In gain set to +4 dBu.

**Measured with “AN 3”/“AN 4” gain set to +4 dBu and Inst. mode disabled.



© 2019 Audio Precision, Inc. All Rights Reserved. XIX10010730